




Area Intelligence

Mike Shelby

STANDARD CAVEATS

Don't do stupid things with this training.

Don't violate my trust. I'm here for the right reason: emergency preparedness.

A man with short brown hair, wearing a brown suit jacket, a light blue shirt, and a patterned tie, is looking down with a frustrated or pained expression. He is standing in front of a blue background with a grid pattern. Overlaid on the image are four blue, arrow-shaped boxes containing text. The top box contains the question, and the bottom three boxes contain the same answer choice, 'An Area Study', labeled A, B, and C.

What should you be doing prior to SHTF?

A: An Area Study

B: An Area Study

C: An Area Study

D: An Area Study



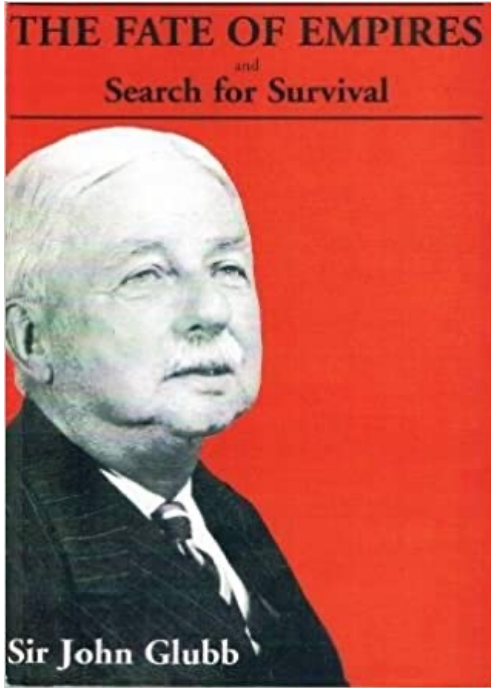
GRAY ZONE
ACTIVITY

THE “WHY?”

TACTICAL ENVIRONMENT



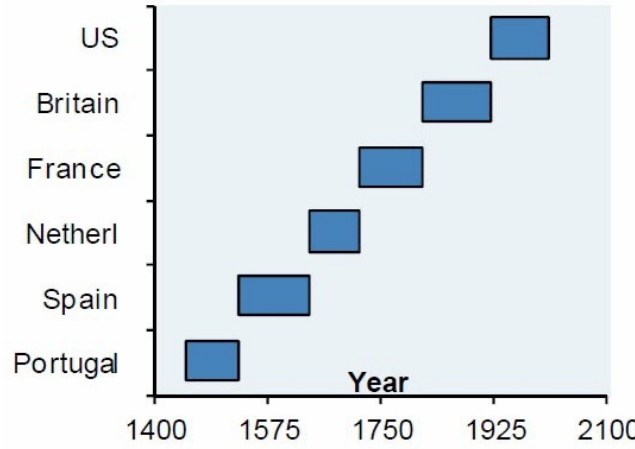
STRATEGIC ENVIRONMENT



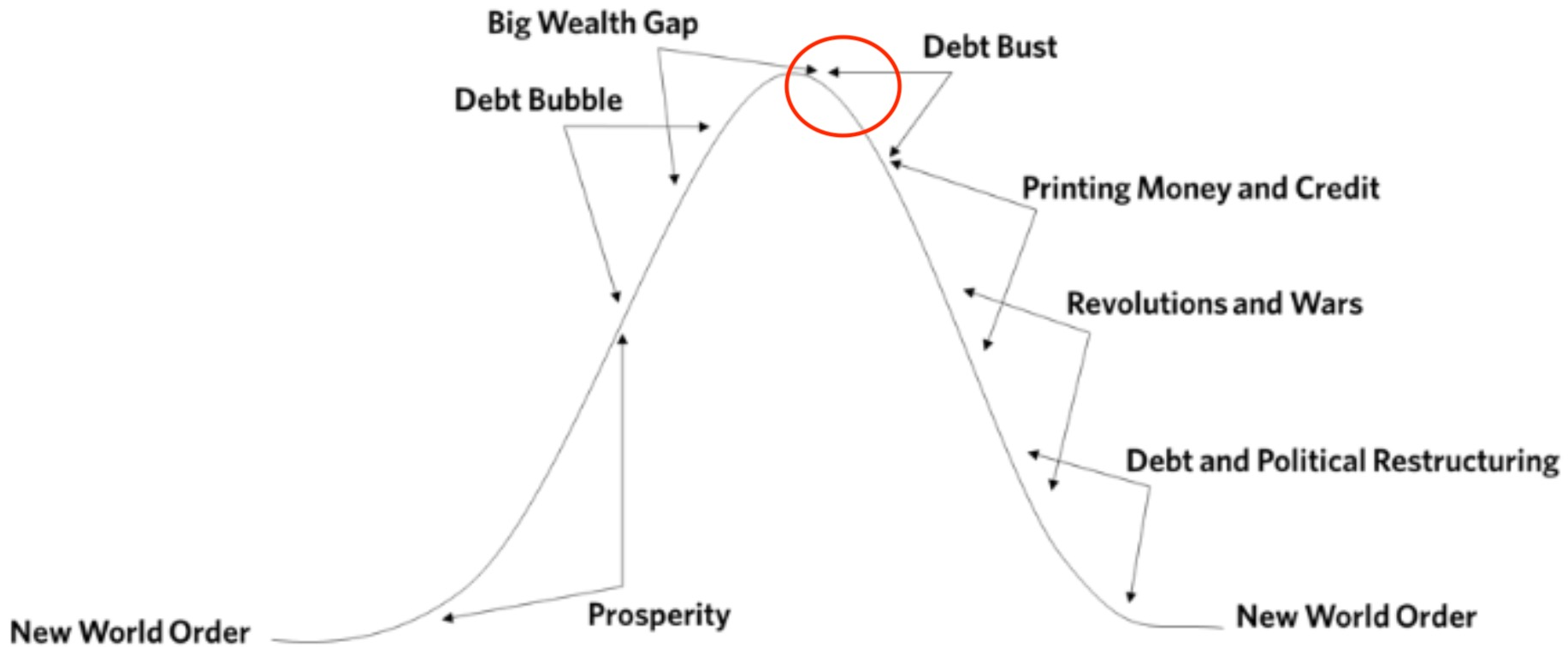
<i>The nation</i>	<i>Dates of rise and fall</i>	<i>Duration in years</i>
Assyria	859-612 B.C.	247
Persia (Cyrus and his descendants)	538-330 B.C.	208
Greece (Alexander and his successors)	331-100 B.C.	231
Roman Republic	260-27 B.C.	233
Roman Empire	27 B.C.-A.D. 180	207
Arab Empire	A.D. 634-880	246
Mameluke Empire	1250-1517	267
Ottoman Empire	1320-1570	250
Spain	1500-1750	250
Romanov Russia	1682-1916	234
Britain	1700-1950	250

Fate of Empires:
2026? 2070?

(c37) Reserve currency status does not last forever



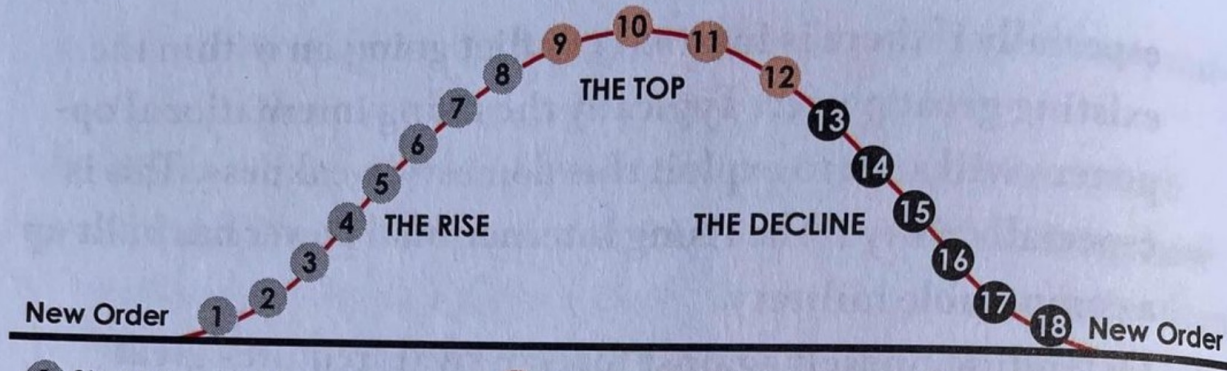
World Reserve
Currency:
2024? 2044?



Credit: Ray Dalio, *Principles for Dealing with the Changing World Order*



THE CHANGING WORLD ORDER



- | | | |
|--|---------------------------|-----------------------------|
| 1 Strong leadership | 9 Less productive | 13 Large debts |
| 2 Inventiveness | 10 Overextended | 14 Printing money |
| 3 Education | 11 Losing competitiveness | 15 Internal conflict |
| 4 Strong culture | 12 Wealth gaps | 16 Loss of reserve currency |
| 5 Good resource allocation | | 17 Weak leadership |
| 6 Good competitiveness | | 18 Civil war/revolution |
| 7 Strong income growth | | |
| 8 Strong markets and financial centers | | |

LOW INTENSITY CONFLICT



Below the
threshold
of conventional
war...

But above
routine,
peaceful
competition



Strategic/
Global events

Indirect
effects



Regional/
Operational
events

Direct and
indirect
effects



Local/
Tactical events

Direct
effects

Why Intelligence?



Blind spots

“Fog of War”

Why Intelligence?



“War is the realm of uncertainty; three quarters of the factors on which action in war is based are wrapped in a fog of greater or lesser uncertainty. A sensitive and discriminating judgment is called for; a skilled intelligence to scent out the truth.” - Carl von Clausewitz

TWO PROBLEMS...

In an emergency/disaster scenario, we're going to have one of two problems:

1. We're not going to have enough information to drive good decisions — a collection problem
1. We're going to suffer from information overload — an analysis problem

Why should you listen to me?



THEN:

- Former intelligence NCO and contractor
- 40 months deployed to Iraq and Afghanistan



NOW:

- Intel Instructor, Gray Zone Activity
- Intel Analyst, Forward Observer
- Out Front w/ Mike Shelby (Podcast)

Gray Zone Training

ACTIONABLE INTELLIGENCE

Three Things You Should

**AFTER THE
AREA STUDY**

Next steps in
SHTF Intelligence

**SHTF INTELLIGENCE
ESSENTIALS**

WATCH NOW



You must become a
political agent in your
locale.

Do your Area Study.

Organize your community.

Build your network.

Develop political, social,
and economic power now.

Or lose later.



Why an Area Study?

Broke: I don't need an Area Study

Woke: An Area Study is just a collection of information.

Bespoke: An Area Study is the basis of all operational planning.



I don't need
an Area Study



The Area Study contains
information I need



The Area Study is the basis of
all operational planning

Why an Area Study?

Increases our survivability

Develops realistic expectations
of the future

Helps us anticipate future events

Drives “Second Layer Solutions”



INTERMEDIATE & ADVANCED

Layer 2 Solutions

Establish Neighborhood Watch	ID Critical Skills/METL
Establish Local Intel Network	- Intel
Build Area Study	- Comms
Establish Community S2/ACE	- Medical
Identify Future Supply Lines	- Engineering & Ag
Establish Ties with Local Producers	- Defense
Establish Logistics Network	
Establish Prolonged Field Care	Fill Critical Skills Gap w/ Tribe

Layer 1 Solutions

BASIC

Water Storage	Fire & Survival	Self-Defense Training
Food Storage	Bug Out Bag	Bao Feng
Water & Food Sources	Ouch Pouch & IFAK	Ham Radio
Shelter	Means of Self-Defense	

Top Four Reasons

1

**IDENTIFY THE FULL RANGE OF
AN AREA'S:**

**THREATS
HAZARDS
VULNERABILITIES
AND
LIMITATIONS**



Top Four Reasons

2

**IDENTIFY THE FULL RANGE OF
AN AREA'S:**

**ASSETS
OPPORTUNITIES AND
NEUTRAL FACTORS THAT CAN
BE TURNED INTO POSITIVE
FACTORS**



Top Four Reasons

3

**AN AREA STUDY IS MISSION
CRITICAL FOR:**

**PROVIDING AREA SECURITY
DISASTER RESPONSE
SEARCH AND RESCUE AND
ESCAPE & EVASION**



Top Four Reasons

4

AN AREA STUDY HELPS YOU:

**EXPAND YOUR TRIBE
INCREASE YOUR ACCESS TO
INFORMATION
AND
BUILD LOCAL POLITICAL,
SOCIAL, AND ECONOMIC
POWER**



When you start
your Area Study

When you see
what's in it



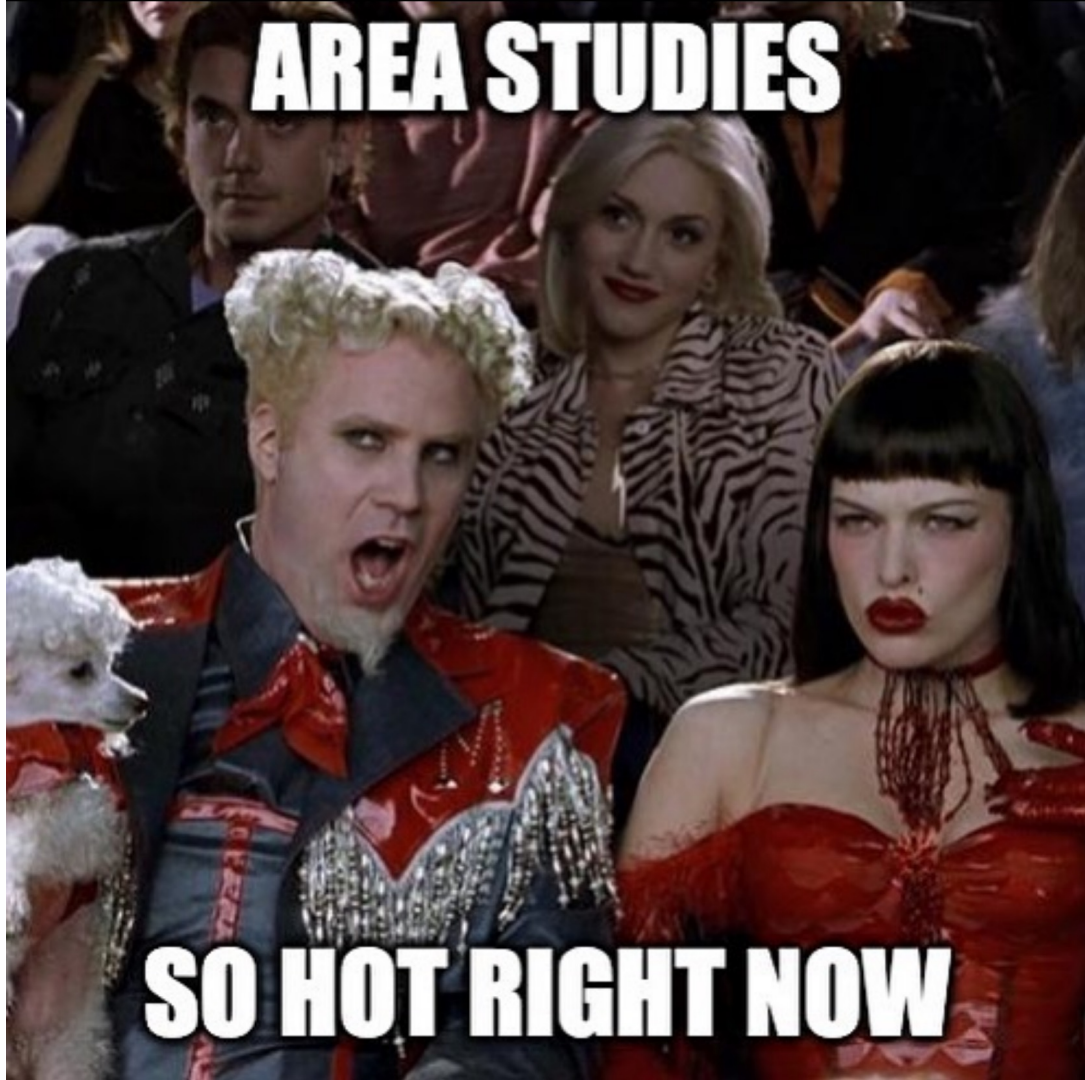


GRAY ZONE
ACTIVITY

THE AREA STUDY



GRAY ZONE
ACTIVITY



Area Study Checklist

If only we had a checklist...

Some guide and format that told us exactly what information to gather and how to organize it...

Area Study Overview*



- Title Page
- Area of Operations Overview
- Area of Interest Overview
- Route Maps of AO/AI

- Physical Terrain & Weather
 - Human Terrain
 - Critical Infrastructure
 - Politics & Governance
 - Military, Security, & Law Enforcement
 - Economy & Finance
 - Threat Overview
- Your
Operating
Environment

KEY TERMS

Area of Operations
(AO)

Strategic

Area of Interest (AI)

Operational

Threat Environment

Tactical

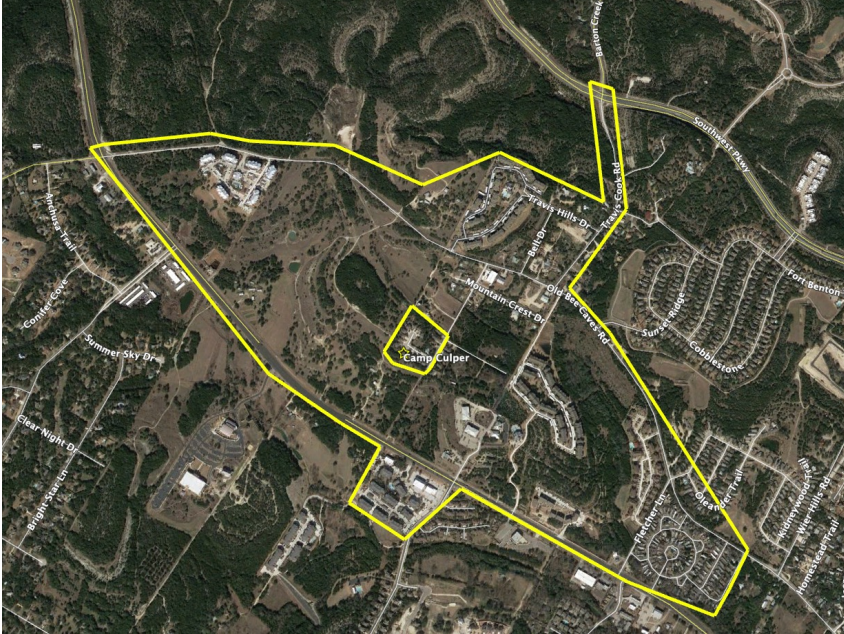
Operational
Environment

AREA OF OPERATIONS



- Your home/property - direct effects
- Where you expect to conduct operations
 - Static/Fixed
 - Mobile
- My neighborhood
 - Around 42 people

AREA OF INTEREST



- Area I'm interested in - indirect effects
- What outside my AO is important?
- What outside my AO could affect me?
- What locations or areas do I want to monitor?

OPERATIONAL ENVIRONMENT

- Physical Terrain
- Human Terrain
- Critical Infrastructure
- Politics/Governance
- Military / Law Enforcement / Security
- Economics/Finance

Area Study

The time to gather local intelligence
for emergency preparedness and
community security is

NOW

**I came here to drink milk and
produce intelligence**

@culper_intel

... and I'm all out of milk.

Q&A

What else do we need to cover?



GRAY ZONE
ACTIVITY

www.grayzoneactivity.com



EARLY WARNING

A DAILY INTELLIGENCE BRIEF FROM FORWARD OBSERVER

www.forwardobserver.com